

MONTHLY MEMBERSHIP PROGRESS REPORT

District 324 N

Results as of: 5/31/2024

GMT:

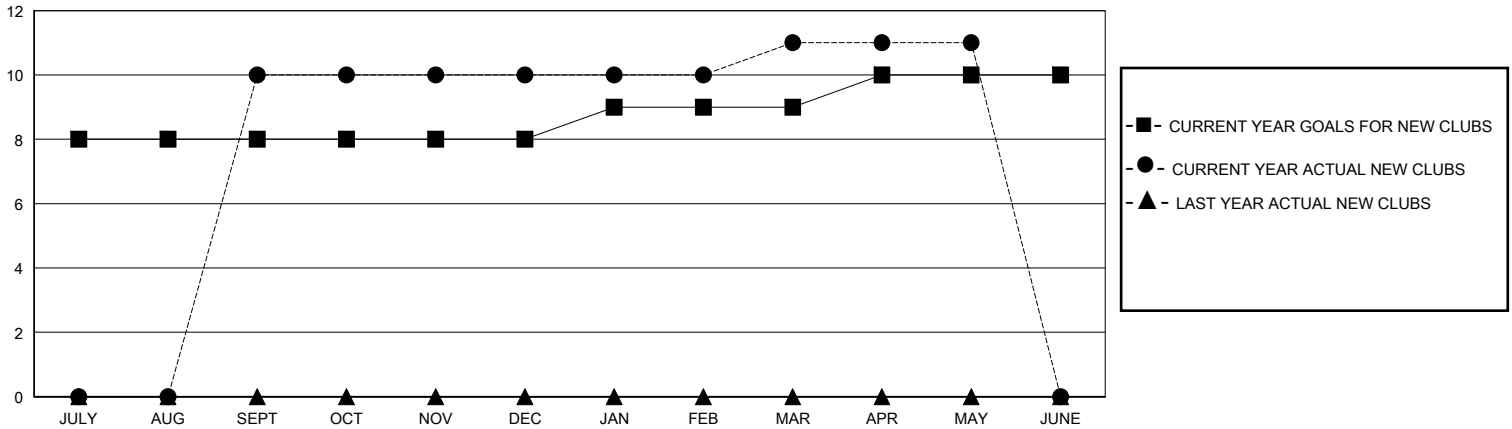
LOCATION INDIA

GMT CA

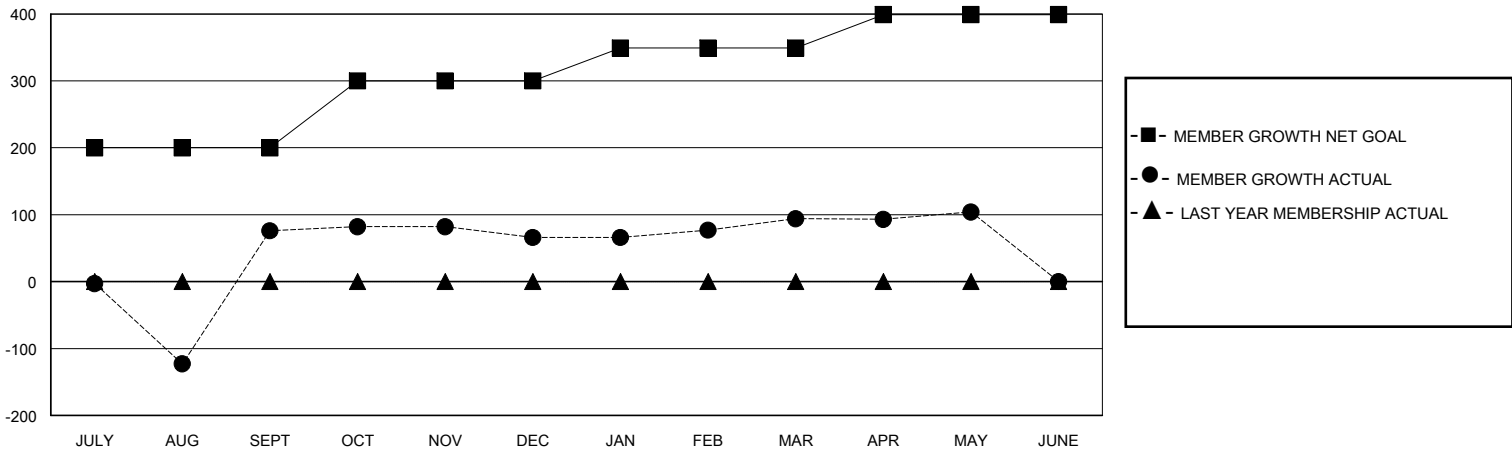
Clubs			
RESULTS FOR 2023-2024			
QUARTER	NEW CLUB GOAL	NEW CLUBS	DROPPED CLUBS
JULY/AUG/SEPT	8	10	0
OCT/NOV/DEC	0	0	0
JAN/FEB/MAR	1	1	0
APR/MAY/JUNE	1	0	1

Members			
RESULTS FOR 2023-2024			
QUARTER	MEMBER GROWTH NET GOAL	MEMBER GROWTH ACTUAL	DROPPED MEMBERS ACTUAL (including transfers)
JULY/AUG/SEPT	200	218	135
OCT/NOV/DEC	100	46	44
JAN/FEB/MAR	49	34	5
APR/MAY/JUNE	50	23	12

GOALS AND ACTUAL NEW CLUBS CUMULATIVE



GOALS AND ACTUAL MEMBERS CUMULATIVE



DROPPED CLUBS: 1	25 CLUBS OF 44 ADDED 1 OR MORE NEW MEMBERS	<u>GENDER DISTRIBUTION</u>	
<u>DROPPED MEMBERS</u>		MALE	914 (67.06%)
DECEASED	0	FEMALE	449 (32.94%)
CLUB CANCELLED	11	TOTAL FAMILY UNIT MEMBERS 484	
OTHER	185		
TOTAL	196	FAMILY MEMBERS PAYING HALF DUES 335	
CLICK HERE FOR CUMULATIVE MEMBERSHIP DATA		TOTAL FAMILY UNIT MEMBERS 484	
		FAMILY MEMBERS PAYING HALF DUES 335	